

PRESIDENT'S REPORT

March was a great month for the Manawatu Golf Club with the start of many of the major club competitions and the hosting of the Michael Higgins Memorial Golf Day. I believe April is going to be even better with the Brian Green Property Group Super 6's, the Robertson Prestige Pro Am, and the always popular Tailored NZ Par 3 competition.

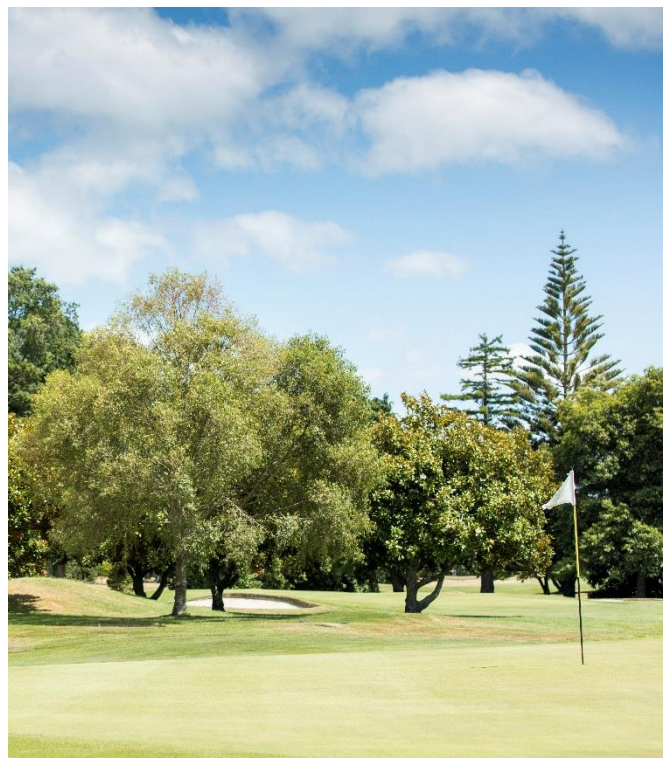
On behalf of the club, I would like to extend a warm welcome to our membership to come down and see golf of the highest quality this week on our beautiful course. With players like Sam Jones, Nick Voke, Tyler Hodge, Jordy Loof, and Josh Geary — the standard of play in the Super 6's is going to be incredibly high.

The first opportunity for the public to see these guys in action is the Pro Am Shootout from 4pm on Wednesday. Everyone is welcome to follow the shootout format where the top 5 pros, plus two sponsors invites, play knock out golf over the Super 6 holes. They are playing for \$5k in the shootout so this is next level drama!

Members and guests are also welcome Thur-Sat to follow their favourite players as they try to qualify for the top 24 to make Sunday's Super 6 matches. I hope to follow Bledisloe Cup winner Zach Swanwick around our Course and I will also be supporting our local MGC Pro Tim Berry as he showcases his game on our home track — really exciting golf to be watched and with a total Prize Pool of \$60k, a win here will really be big for these aspiring pros.

Thanks for the feedback about my comments about making Junior Golfers welcome on the course that featured in last month's newsletter. Every response I've had is positive and all agree that we must do better at ensuring our juniors, and players new to golf, enjoy their experiences at our club. Please continue to hold each other accountable as we build that culture at MGC.

This month, can I ask for your support with acknowledging and respecting our course marshals. There has been a significant improvement in the speed of golf on a Saturday since Wayne, Robbie, and Stuart have stepped into these roles. In 2023, Saturday rounds could be up to 5 hours long — this year, most rounds are completed in close to 4 hours, which is great — and exactly how it should be. There has also been a significant increase in income due to the marshalling they do in the evening to ensure the number of golfers that freeload and don't pay green fees is really reduced. Thanks team — you're making a big difference. Again, we have a very small number of members who have been rude or difficult to deal with and even one or two who think the marshals are an easy target for abuse — please be assured that there is zero tolerance for this, and action is being taken.



Dec 1 – Feb 28th Summer months	# of Member Cards	# of Visitor cards	Total
2016 – 2017	7441	363	7804
2017 – 2018	6867	397	7264
2018 – 2019	7539	655	8194
2019 – 2020	7859	546	8405
2020 – 2021	7914	440	8354
2021 – 2022	9148	572	9720
2022 – 2023	8879	546	9425
2023 – 2024	10,916	646	11,562

Our MGC Head Golf Pro Alan Hyatt presented a report to the FCC which shows the huge increase in the number of people playing golf at Manawatu this year. The numbers below are fascinating and also reflect the potential for extreme wear and tear on the course. It beggars belief that the course has actually got significantly better, in spite of the 20%+ increase in rounds played. Kudos to Kiel and his team who are doing a simply awesome job. The greens are pure, the fairways lush, and the tees incredible. I can't wait to play asap after the Super 6's to test my game in the conditions that test the pros.

Alongside the increased rounds played, the Membership report for March was also amazing. For the first time ever MGC has over 1200 members. The membership committee will meet in May to continue to discuss how best to ensure our club is a place members enjoy and are proud of. The new members Entrance Fee is one mechanism we have decided to put in place over the next 12 months to ensure we continue to offer the best possible member experience. Over the last 3 years post-covid, we have lost on average around 100 members per year but have gained on average 200+ members per year — meaning a net gain of around 100 members pa. And who can blame them, our course is awesome, and our club is great.

I hope your golf is going well. I managed to discover a rare purple patch in the first couple of weeks of March with back-to-back Pros Comp wins. That purple patch is now well and truly back to black, as in black for double bogeys, and I am now back to making my regular \$10 donation to the Club haggle.

Enjoy the Super 6's, thank you for supporting the club, and please let me — or any other member of the committee — know if you have any views about the direction we are heading at the MGC.

Brent Cawthray
President

The screenshot shows a news article from the Manawatu Guardian. The headline is partially obscured by a red diagonal banner that reads "APRIL FOOLS DAY! YOU CAN RELAX!!". The article title is "Manawatu Golf Club vote to close two holes to allow falcon sanctuary". The article text below the image states: "The first and second holes at the Manawatu Golf Club will be closed for the six month Karearea breeding season." Another line of text says: "The Manawatu Golf Club voted at their monthly FCC meeting to work with the Department of Conservation and Wild Base to create a breeding sanctuary at the Hokowhitu Course. This will mean the 1st and 2nd hole will be closed to all golfers from September 1st each year, for a short period of 3-4 months. The club will look at opening temporary holes either on the driving range or the old 8th to ensure golfers can still play..."

Below the article, there is a section titled "Latest from Guardian" with a sub-heading "Waka ama workshops inspire rāwhiri to engage with science".

At the bottom of the screenshot, there is a red box containing the following text: "Thanks to all who took the April Fool's Day course update on Facebook in good humour. Rest assured we are **not** closing Hole 1 and 2 for the Falcon breeding sanctuary."



The Manawatu Golf Club
would like to acknowledge
the following sponsors of the
Brian Green Property Group
NZ Super 6's

NAMING SPONSOR



BRIAN GREEN PROPERTY GROUP
Property Investment, Management & Development

MAJOR SPONSORS



SUPPORTING SPONSORS



GENERAL MANAGER'S REPORT

We are almost halfway through FY 2024; it is a good time to check in on how we are tracking towards our Operational Priorities and Goals. At the recent Full Club Committee meeting I presented a report that highlighted our growth, successes, and challenges. If we were to summarise our progress to date, I would say that we are on track to achieve the goals of the operational plan and the income needed to reach our budget. There is lots of work to still do, the economic slowdown is being seen in both the Golf Shop and the Café income, but with great staff and improved processes these are still two essential income streams for the club.

The Finance, Audit and Risk (FAR) committee met last week and supported the recommendations that will help us achieve our goals and continue to be able to provide a club and course our members are proud of. These recommend the introduction of the Entrance Fee and the passing on of the costs associated with CC and Pay Wave transactions. I fully support both the Entrance Fee introduction and the introduction of the CC and Pay Wave surcharge. These two relatively small changes have the potential to benefit our MGC financial position by up to \$100k pa.

The Entrance Fee comes into effect from April 1st and takes the form of a one-off payment of \$500 for all new members in all new membership categories **except Juniors**. The Entrance Fee is paid when joining and then the **full amount** is credited to the members account to be used in the first 12 months of membership. So, in essence, every new member will make a compulsory \$500 contribution to their house account which they will need to spend in the café, bar or golf shop in their first 12 months. For new members in the U25 and U30 category, the entrance fee is \$250.

The Pay Wave and CC surcharge comes into effect April 8th and is set at 1.5% of any purchase.

I am always proud of the role the club plays in the Arohanui Hospice fundraiser. And this year, the club, our staff, and the wider community were at their best. It was a wonderful day and reports of every part of the operation were outstanding. The course was immaculate, the food and post-match events polished, and the buy-in from every member of staff was incredible. We can all be proud of the



role MGC plays in this event. As soon as we know of a total raised, I will share with our MGC wider community. This event was also possibly the first real test of the new F&B leadership team. I am very happy with how Nikki, Bruce, and Rebecca contributed to the overall success of the day.

The next big test for all of us is the Brian Green Property Group Super 6's. We are now just days away from the new time slot for this event. We have sold out the Pro Am (36 teams) and we have secured strong funding from our naming sponsor, Sport Manawatu and Robertson Prestige. The addition of the hole-in-one prize for the Pro Am is a really exciting upgrade for this event. Income from hole sponsorship has reduced but the budget reflects a profit of between \$15-16k. Post-event, we will complete a thorough review to see if the Super 6 format is still fit for purpose and whether the cost to the club, both in terms of staffing hours committed, burden on sponsors, and loss of access to the course for our membership, is still worth it. I hope it is as I thoroughly enjoy the event and know that many of our members (and staff) take great pride in putting on a wonderful show for the week. The quality of players entered is extremely high, including DP World Tour players, past winners, and the leading amateur from the recent NZ Open. The field also features a number of top amateurs, including members of the Eisenhower team. Golf NZ assured us of a better chance of attracting a strong field if we moved to the April window. Whilst the quality of the entries is very high and includes a 40 strong PGA Pro field (along with 40+ Amateurs), the field is relatively small (82 max). Compared to the days of a field of 144 for the Lawnmaster and similar events, the scale of the event is reduced. I am really excited by the new format for the Pro AM, the Pro's Shootout on the Wednesday afternoon, and seeing how the Pros handle our fantastic course and fast greens.

GENERAL MANAGER'S REPORT

Our course is going to be presented in absolutely fantastic condition. Feedback from every player in March has been awesome — “Some of the best greens in NZ, fantastic fairways and a truly great course.”

Club Captain Dave Boswell has done an incredible job raising the profile of Pennants teams over the last 12 months and they have had a large presence on club days in March. The match committee and the CC are working to review the best time for pennants matches entering the field on a Saturday to ensure both pennants' players and members can enjoy their best round.

Monday openings in the Café have been steady at best. When they coincide with a golf event (i.e. 9 Hole Tri series) or a pre booked corporate event, they are a real positive to our operations. When they are a stand-alone Monday café, they are covering the cost of our staff and that's about all. We are committed to the March – May trial and I will keep you up to date throughout the review process. Thanks to all who are helping spread the word that Mondays are open at the club.

We have made great progress on the Cell Phone #2 tower agreement. The electrical infrastructure benefits have been signed off and now we just wait for the legal lease agreement to be signed off by the club solicitor, and we are good to go. I would expect that construction to start within 6–8 weeks of MGC sign off.

The Secondary School Girls 'Give it a Go' programme and the increased capacity junior programmes, are going gangbusters. These junior programmes are a real feature of the Manawatu Golf Club and something we really can be proud of. Speaking with my 'Dad'



hat on rather than my 'GM' hat, I am so thrilled that my daughter is one of 13 PNGHS girls who have loved their 6-week programme with Hannah and Brydie, and she can't wait to get out on the course. I can also report that the Gen Next competition that attracted 19 pairs of players (young and old) has also been a great success — even for those of us that are in the “winner of the loser's” part of the competition!

Thanks in advance to all the volunteers who will make a massive contribution to the success of the Brian Green Super 6's this week. We have over 50 of our members hosting players, course marshalling, scoring, manning the stop/go sign, and a variety of other crucial, but often unseen, roles. Thanks heaps.

In the May newsletter there will be the annual chance to have your say and give feedback via the MGC Annual survey. If you have a question that you would like the membership to consider, please do let me know.

**Nga Mihi
James**

CREDIT CARD AND CONTACTLESS PAYMENT SURCHARGE

From April 8th we are introducing a 1.5% surcharge for Credit Card & Contactless payment (Paywave) transactions on all EFTPOS terminals in the club. This is being introduced to cover the annual cost of Merchant Fees which was \$30,000 last year.

We strongly encourage you to use your house account to avoid this surcharge and speed up payment. You can top up your house account via online payment to the Club Bank Account 01-0755-0195053-000 with your membership number and House account as a reference. Alternatively, there is no surcharge for inserting or swiping Debit cards.

TEAM EVENT

ALL
WELCOME



PAR 3 CHALLENGE

SUNDAY 21 APRIL 2024

11:30AM SHOTGUN START

18 PAR 3'S

Team of 4
\$225

REGISTRATIONS &
BBQ FROM
10.30AM
BEVERAGE CARTS
ON COURSE

Click [HERE](#) to register for the Par 3 Challenge.

MESSAGE FROM THE CLUB CAPTAIN

What an incredibly busy time it is with so many competitions being played along with a full complement of pennants games being played on both Saturdays and Sundays — not to mention the course being booked out for special occasions. Thanks to our Green Keeping staff, the course is taking the extra usage in its stride — a credit to Keil and his team who are working so hard to get the course in tip top shape for the forthcoming Super 6's tournament (4/7 April).

I have talked with a number of our junior members who are involved with our new Academy and am very pleased to hear them so positive about what they are learning and how they are dedicated to taking on board suggested improvements to how they approach the game of golf — although perhaps some attention to paperwork might be appropriate for most.

On another positive note, all of our pennants teams have been competing successfully and sit well on the various tables so far. Led by our A grade team who have not lost a match so far this season, our B, D and E grades similarly have achieved great results.

As for the Presidents team (by the way, still the best-looking team in their competition by far!), we have had two wins and two losses in a difficult draw. On Sunday 24th March we hosted Rangitikei and the result, a win for Manawatu 6 ½ to 5 ½, came down to the last pairing of our President, Brent Cawthray, and Brendan Hapeta, who finished with a clean sweep of 3 wins. Thanks guys, you are indeed our anchors. We are currently sitting 5th but future catch-up games will seal our fate one way or the other. Fingers crossed.

Some important competitions have been completed over the past few weeks. Congratulations to Clive Pedley and Sean Kelly who won the Summer Cup pairs. Also, congratulations to Warren Williams, who took out the Memorial Day competition on countback from Vonky and received the John Christie Driver Trophy.

On Saturday 23rd March the annual Captains versus Presidents competition was held for the Arnaud Barraud Cup. This year, players could choose who they played for and the top ten cards from each side were counted for the trophy. Despite devising a cunning plan to entice players to opt for the Captain's team with a free Easter egg, the President's team came out decisive winners 23 to 7. Congratulations Brent Cawthray. All I can say is... be very alert to what might occur leading up to next year's challenge.

So that's all from me this month. Except to say I'm very excited about the Super 6's competition coming up. If you want to see some outstanding golf, feel free to come down with your friends from Friday 5 April through to finals day on Sunday 7 April. Debbie and I are hosting Jordan Loof again, last year's winner, and we hope he will go back-to-back to take out the prestigious event again.

Happy Golfing.

**Dave Boswell -
Club Captain**



Below: A happy Presidents table after defeating Rangitikei 6 1/2 to 5 1/2 on Sunday 24 March.



WOMEN'S GOLF - MESSAGE FROM THE WOMEN'S CLUB CAPTAIN

March has proved to be just as mad as we thought it would be — but with some good golf played at times.

We have had representation at Pahiatua's Open Day and Jill Clifton's good score added some badly needed points to our 'Race to the Shield' tally. Thanks to those that made the trip over the hill.

The National Team's qualifier had our four best rounds scored by Shirlee Jenkinson, Megan Waugh, Alicia Boag, and Bridgid Higgins. The district final for this is played at Wanganui on Friday 26th April. Unfortunately, not everyone is available to play this so we have moved down the list of reserves and the team to play will be Megan, Bridgid, Jill Clifton, and Deb Archer. All the best.

Our pennants are continuing, and the Monday team are back on the winning side after travelling to Levin and coming back with a win against Feilding 6/2. The Weekend team had the long trip to Waimarino, a glorious day for golf but no points sadly — they did score some delicious chocolate eclairs though! The fourth round for the Weekend team was played at Levin alongside the Championship teams. Levin must be quite conducive to winning ways as Linda and Jo came away with a win against Rangitikei for the Weekend team.

Our Championship Red team, Rebecca Hopper and Lindy Wheeler, had a clean sweep against Feilding Green, while the Manawatu White team of Leander Tyacke and Mea Hohepa had a hard battle against Feilding White, coming away with a loss.



The next rounds are Monday 8th April at Pahiatua and Sunday's is April 14th at Feilding. I'm sure they will give it their best.

We have experienced a little bit of wind over the last week and as the Nancy McCormack Memorial Foursomes is set, we can't unfortunately dictate the type of weather on the day. The 14 women soldiered on, playing 36 holes. At least it is only every other shot, but it is a net competition, so all the shots count. Our winners, with a really good morning round on net 69 and a reasonable afternoon round of 75, have their score of 144 (which works out as -4) sent through to the district. From there the best result is sent through to Golf NZ. Congratulations Maxine Whittfield and Lorraine Sixtus — fingers crossed that your score will be the winning one for Manawatu Wanganui.



Saturday 18-hole women golfers are having a great time challenging themselves on themed clothing. After the pretty in pink featured last time, they then got into the horse racing vibe. So, if you saw a couple of jockeys out there, that was the reason. Look out for the next fashion in the field.

You will have checked your 2024 programme book and noticed there are two Good Fridays, so as you

WOMEN'S GOLF - MESSAGE FROM THE WOMEN'S CLUB CAPTAIN

will all keep up with the play you may ignore the Good Friday on the 12th of April, unless you still have some Easter eggs to consume.

Further into April we have the fun Autumn Mixer, which you would have seen the poster with the needed information. So, book yourself in via the link found on the next page. Simply fill in the form with your name, ID number and if you would like to play with a specific person just fill in their name. They can fill in their own form and mention your name. You do not need to name anyone as there will be plenty of individual people, I am sure. Once you have filled in the form just hit the submit button. Easy!!

Also, on the April calendar, we have the National Home Links. This is an LGU round (the no pick up net scores) that include Coronation Medal, Aotearoa Cup, and Veterans Cup. There is also a junior best Gross and Net score competition so make a note on your calendar to play on Saturday 27th or Tuesday 30th April. You never know, your score may win the National medal as Rebecca Hopper did last year.

Thursday Club is continuing but please note we are moving the round that is listed in the programme book on May the 23rd. This clashes with the BMW Golf Day so we will play Thursday Club on Thursday the 9th of May instead.

Great golfing this April!!

Deb Archer - Women's Club Captain

NEW MEMBERS

The Committee would like to confirm the acceptance to the Club of the following new and returning members who applied in February 2024.

7 Day: Ben Arcand, Steve Price

6 Day: Debbie Hart, Seongho Hong, Yourim Won

Under 30: Hojeong Choi

Under 25: Paris Ferguson, Uvin Kim, Thomas Kirk, Isaac Leigh, Mikaera Marsh, Isabel Richardson, Neihana Takitimu-Cook, Avishay Naidu

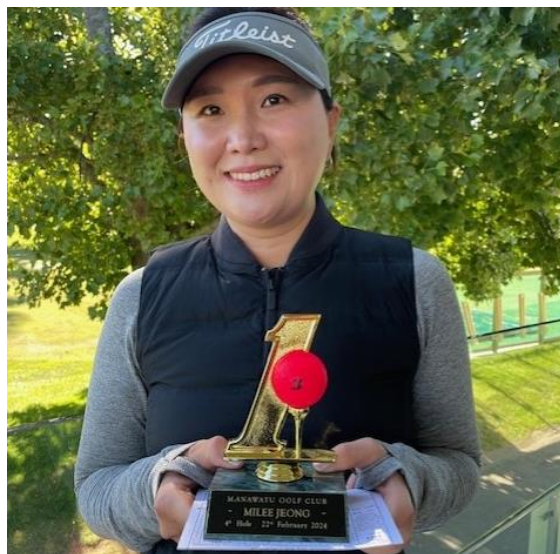
9 Hole: Heinz Fellerhoff, Nailasikau Halatuituia, Gregor McGregor, Susan McKilvie, Amy Westergaard.

Restricted Jnr: Ethan Jenkins, Lucian Larking, Samuel McKellar

Social: Blair Jones, Jim Morton

During this same period of February 2024, 21 members resigned, bringing our total membership number to 1208 members.

We wish our resigned members all the best and welcome our new members. We are sure you will enjoy your time at the club.



Above: Congratulations to Milee Jeong for her Hole in One on the 4th hole on 22nd of February.

Below: Congratulations to Janice Walker for her Hole in One on the 16th hole on 25th of February.





Manawatu Golf Club Women's Committee invites

ALL MGC WOMEN GOLFERS

To the

ANNUAL AUTUMN MIXER

6x6x6 CHALLENGE

on

Sunday 14 April 2024

First Tee off 12:00pm

Enjoy an afternoon celebrating Women's Golf at MGC

With a partner, play 18 holes in three different formats – Holes 1-6 Foursomes (Alternate shots) Holes 7-12 Combined Stableford, Holes 13-18 Best Ball (Stableford)

Novelty competitions include:

Longest Drive and Nearest The Pin (two divisions).

Concluding in the clubhouse with nibbles, cash bar, and prizes.

Entry Fee is \$10 per person (payable on the day)

Contact Natasha (natashameyer06@yahoo.co.nz) or Deb (archer@inspire.net.nz) for more info

Click [HERE](#) to enter the MGC Women's Autumn Mixer.

MIXED NINE HOLE NEWS

We have had a very busy month with the Open Days and Round Robins starting.

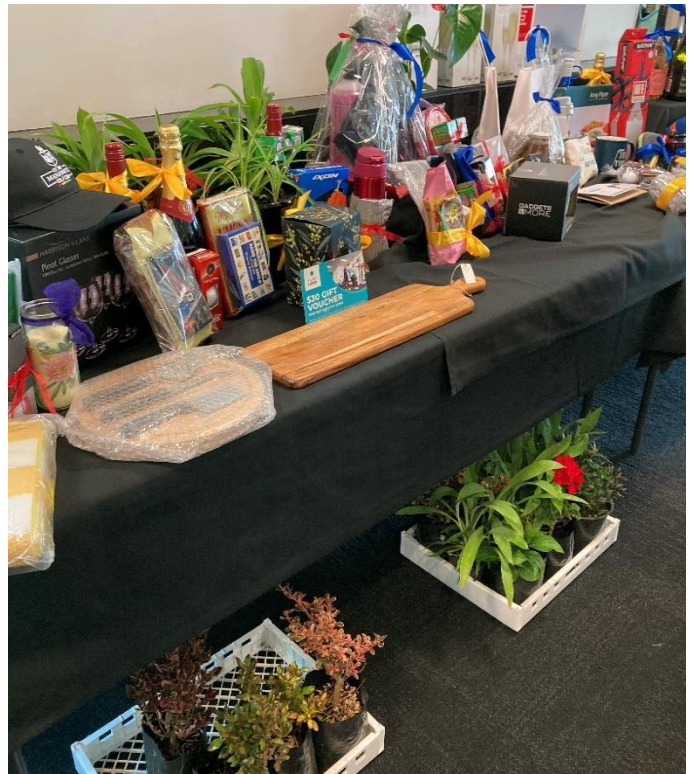
The first Open Day was at Palmerston North with a full field and our Manawatu players doing extremely well. The Marton Open Day again had Manawatu Players in the winner's circle.

We hosted our Round Robin, which was a good get-together for Man/Wang players and the prizes were well spread.

Last Sunday we hosted the Doug Muir Memorial Tournament. This was a great success, raising \$2,415.00 for the Rescue Helicopter. We had a full field playing Ambrose and even had to turn some teams away. The Putting Competition was won by Tony Foster (Basket donated by Pioneer New World) and the winners for the day were MGC Golf Tragics, playing on a very low handicap. The team was made up of Jay Howes, Mike Smith, Nick Page, and Gavin Howse — well done!

This was a great day with great donations for raffles. Thanks to everyone involved, especially Carmen Fraser and Alva Joe for organising, and Sonja and Sarah for running the putting competition.

Levin Foursomes on Monday was won by Frances Clarke and Sue Chard, with Anne Flipp and Barbara Smith finishing third — well done girls! There were no men or couples in the winner's circle. It was a fun day on a very dry course.



Above: The amazing raffle table at the Doug Muir Memorial Tournament.

Below: The winning MGC Golf Tragics team.

Bottom Left: Frances Clarke & Sue Chard.



Our Easter Raffle has been drawn. The winners were Barbara Trollope, Robyn Anderson, Bill Flipp, and Pauline Fugle — they will all have a happy Easter with plenty of eggs.

Good golfing everyone.

Colleen Fraser
9 Hole Club Captain





CELEBRATING
25 YEARS
WORLD WIDE



IMMERSIVE THEATRE AT ITS
STARTLING BEST
BROADWAY BABY



SIDE-SPLITTING LAUGHTER
GUARANTEED
SCOTTISH FIELD



PERFECT FOR THE WHOLE
FAMILY TO ENJOY
SEE DO EAT

FAULTY TOWERS

Original

the Dining Experience

it Interactive
Theatre

Manawatu Golf Club

19 Centennial Dr, Palmerston North 4410

Saturday 14 September 2024

Doors open 6:30pm; show starts 7:00pm

\$140.00 pp, includes a 3-course meal and 2-hour interactive show

06 357 8793 ext 3 | www.manawatugolfclub.com

Click [HERE](#) to book your tickets now..

COURSE NEWS

How was everyone's Easter break? I hope you all enjoyed a good break with family and friends.

Out on the course we have been busy preparing for the tournament week ahead. After the early rain in March, the course began to dry out nicely with some beautiful weather. Once again, I want to take this time to thank each one of you that put your hand up to volunteer, whether it's during the year or for tournaments, it is invaluable – Thank you! I must add, it's awesome to have some young enthusiastic golfers also helping on the course.

There are a few things I thought of explaining around the tournament: Cut heights, all heights are set with a height bar, what we call bench setting — Greens 3.2mm, Tees & Surrounds 9mm, Fairways 12mm, and rough are at 55mm. The heights during the tournament are lower than usual heights, but to keep them at a lower height would add more costs and maintenance. During the build-up and throughout the tournament, we cut greens, tees, surrounds and fairways daily. By doing this, you get a denser sward of grass and more uniform blade of grass. Usual maintenance that we do throughout the year, we put in extra time and, with the help of the volunteers, try to get some of these tidied up for the tournament also, for example, topping up bunkers and weed eating bases of trees.

Due to our course being busy, all of the above does have its challenges, but we enjoy what we do — can't beat an outdoor office!

Right: Kiel using the Stimpmeter. When people ask what the greens are rolling at, this is how we check. They were at 10.5ft. at the start of tournament week.

When the tournament finishes, we will look at renovating all the surfaces. We are starting to get cooler temperatures but will attempt to do this with minimal disruption. Greens to be solid tined, tees and surrounds cored/dethatched, and fairways dethatched and maybe cored. This is necessary maintenance required to achieve quality turf. We do appreciate and thank all members and visitors that give way to us while we do this.

I want to invite all members to come down and enjoy some quality golf as well as being a proud member of a wonderful club. When you are next out playing, please continue to replace your pitchmarks and repair your divots. Remember, as we head into the cooler months, beware of slippery surfaces, make sure you are walking in a safe place, sticking to paths where possible.

Enjoy your golfing month.

Kiel Stechman - Course Superintendent





EST. 1895

MANAWATU

GOLF SHOP



MANAWATU GOLF CLUB

GOLF SHOP NEWS

Hi everyone,

It's been a busy month here in the Golf Shop for us. We have had a lot going on.

We said goodbye to Guy, who officially finished up on the 24th of March. We had a great night farewelling Guy at Tenpin Bowling. Somehow Brydie ended up smashing us all — she may have chosen the wrong Pro career! Guy will still be around over the next few weeks doing some odd hours to fill in and help out before he makes the move to Taranaki. Also, Corbyn Charles, who some of you may have met on a Saturday afternoon over the last 5 months finished up on the 23rd of March. We wish him well.

For all of you geeky golfers out there (like us!), here is a link to a video explaining how important the dimples are on a golf ball and why it is so important that they are made with the highest quality controls. As you will see from the video, it doesn't take much at all to drastically affect the ball flight. This is why we stock and trust the golf ball brands we have in your Golf Shop. (I could probably do with the ball that has the different sized dimples on one side to counter my hook). <https://youtu.be/aeibKavgqtc>

Super 6's week: All the best to all the MGC members playing in the event. Our very own Tim Berry is representing the Shop, I (Alan) had entered and was really looking forward to playing again for the first time in a long time, however, my body has other plans and I'm out with injury.

Just remember, if you have any questions regarding your game, please don't hesitate to ask us. We are here to help!

Your Golf Shop Team - Alan, André, Tim, Brydie, & Hannah.

Game 2	1	2	3	4	5	6	7	8	9	10	Tot.
BRYDIE SKIP	9 / 6 / 4 4 7	27	-6	39	/	X 8	/	XX3			146
	16	30	38	47	54	63	83	103	123	146	
GUY SKIP	X 6 -	X	X 8	1	X 1	59	/	6	/	- 7	133
	16	22	50	69	78	94	100	116	126	133	
TRIST SKIP	6 2 4 4 7	/ 5	36	-6	-8	-5	26	/ 5	4		90
	8	16	31	39	45	51	59	66	81	90	

PLEASE RETURN BALLS BACK TO R

OUT OF THIS WORLD
S P E E D

COBRA / DARK SPEED

FITTING DAY

FITTING DAY MAY 2nd 2024	TIME Appointments Only, Through The Golf Shop
LOCATION Manawatu Golf Club 06 357 8793 ext 1	

MCDONALD'S MANAWATU JUNIOR MASTERS 2024

May 26th 2024



**ENTRY FEE ONLY \$30
INCLUDES:
MCDONALDS LUNCH AND DRINK
TROPHIES IN EACH DIVISION
9 HOLE AND 18 HOLE STABLEFORD DIVISIONS
18 HOLE GROSS DIVISION
6 HOLE NON-HANDICAP DIVISION WITH MODIFIED TEES**

Entries to:

<https://forms.office.com/r/mLtNgmXJkM>

Or scan the QR code

Entries close on Wednesday 22nd May 2024



Click [HERE](https://forms.office.com/r/mLtNgmXJkM) to enter the McDonald's Manawatu Junior Masters.

WHAT'S ON IN APRIL

Please note this programme is subject to change. Please remember to always check and book via the tee sheets on the Club website or at the card room kiosk for available tee times.

■ MEN
 ■ WOMEN
 ■ MIXED
 ■ EVENT

April

MONDAY	1	8	15	22	29
	Easter Monday				
TUESDAY	2	9	16	23	30
	Brian Green Super Soars	Stableford	Stableford	Par	LGU National Home Links
WEDNESDAY	3	10	17	24	
	Brian Green Super Soars	Stableford: Wade Cup Stroke / LGU Sue Bunt: Round 2 Lavender/Gillespie Cups entries open	Stableford: Wade Cup Par	Stableford: Wade Cup Stableford Lavender/Gillespie Cups entries close	
THURSDAY	4	11	18	25	
	Brian Green Super Soars	Thursday Club	Yorb Business House	ANZAC Day	
FRIDAY	5	12	19	26	
	Brian Green Super Soars				
SATURDAY	6	13	20	27	
	Brian Green Super Soars	US Masters (BMW Black and Red tee haggie) Stroke/LGU Sue Bunt: Round 2 Saturday Mixed Cup entries open Stableford	Par B&A and Watson Cups: Round 3 to be completed Par	Stableford, MacLennan Trophy: Round 1 to be completed Stableford Saturday Mixed Cup entries close LGU National Home Links	
SUNDAY	7	14	21	28	
	Brian Green Super Soars	MGC Womens Autumn Mixer	Tailored NZ Par 3		



SPONSOR OF THE MONTH



Brian Green Property Group

Property Investment,
Management & Development

PLEASE CONTINUE TO SUPPORT OUR SPONSORS AS THEY ARE SUPPORTING YOUR CLUB - Major Sponsors Below



**Brian Green
Property Group**
Property Investment,
Management & Development



Manawatu



PAUL O'BRIEN



MANAWATU KNITTING MILLS LTD



Manawatu Toyota



06 355 5279

www.fowlerhomes.co.nz



ROBERTSON | PRESTIGE



FUJI XEROX



PALMERSTON NORTH
FLOORING XTRA



Courtesy Ford



FORSYTH BARR

